

Elstree & Borehamwood Museum Friends Newsletter January 2024: Issue Number 28



Wishing all our friends a happy New Year

Welcome to your January newsletter and in support of our current exhibition 'Your Museum at 10', we are looking back at some of the exhibits, friends' events and newsletter features that we hope you have enjoyed over the last 10 years. Do you have a favourite? Our archives are bursting with local history, is there something you would like to see featured? We'd love to hear your thoughts. Drop into the museum or contact us:

Email: info@elstree-museum.org.uk

Facebook: www.facebook.com/EBWmuseum

X: [@EBWMuseumHerts](https://twitter.com/EBWMuseumHerts)

Instagram: <https://www.instagram.com/ebwm2007/>

Thank you...

We would also like to take this opportunity to thank all our Friends and Volunteers, without whom, much of this would not be possible. We are so grateful for your support; long may it continue.

Friends are cordially invited...

We are thrilled to be able to offer our Friends an invitation to 'An evening with Nick Male'.

Nick who has lived here since his childhood has many stories and memories as the town has changed over the years and has connections with:

The Studios Rotary Club of Elstree & Borehamwood
The Elstree & Borehamwood Twin Town Association
Hertsmere Acoustic Music Club

Nick will share with us his experiences and stories he has collected about the much-missed Thatched Barn.

This event will take place on Wednesday 17th January, from 7pm to 9pm and is free to friends members.

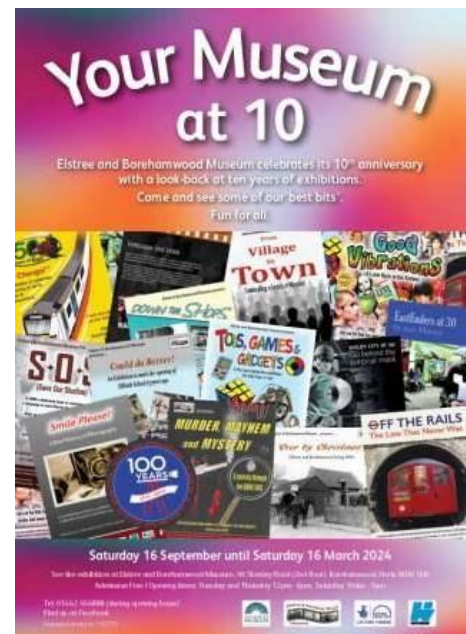
The event will be held on the second floor of 96 Shenley Road, Borehamwood (lift available).

Light refreshments will be provided.

Spaces are limited so please book in advance.

email: friends@elstree-museum.org.uk

Or phone 020 8953 4422



A celebration of 10 years

The following are just some of the topics around our local heritage that we have featured.

2013 It all started on the **18th November 2013** when we moved from Drayton Road to the new premises at 96 Shenley Road and opened with a feature of timelines on Elstree & Borehamwood, a frieze of local photographs, touch screen displays, and video footage supplied by Elstree Screen Heritage.

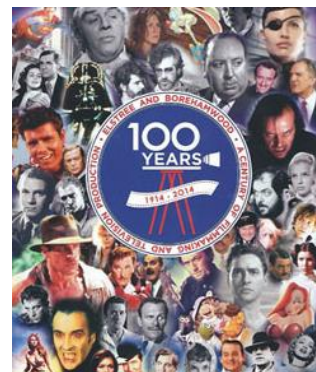
2014 we celebrated with an exhibition of the 100th anniversary of film and television production in our town with help from Elstree Screen Heritage. Our newsletters featured the 90th anniversary of the local Women's Institute 'Jam & Jerusalem'.

2015 Two exhibitions, 'Over by Christmas', a retrospective of World War 1 and a celebration of 30 years of Eastenders which began filming here in February 1985. The newsletters included the gruesome murder of William Weare in 1823 and a feature on a local history walk which ended in Eldon Avenue, the site of some 1946 prefabs and sewage works (yuck!).

2016 'Smile Please' on the history of photography and 'Down the shops' the retail history of the village. Newsletter articles included the story of the filming of the band Queen's hit 'Bohemian Rhapsody' video, War Birds on the First World War Aerodrome of Shenley, and a friend's event with Fred Thomas of Borehamwood Ironmongers where you could buy four candles or fork handles.

2017 'From Village to Town' looking back on a century of migration from inner city London and beyond and 'Toys, Games and Gadgets' proved to be a very popular 'hands on' experience for many who reflected on their Game Boy skills amongst other treasured items. Friends' event celebrating 'Writers in the Wood' local authors sharing their thoughts and works. Newsletter articles on the Lynx Club and the extensive list of celebrated artists who played at this local venue, The Thatched Barn history during World War 2 as Top-Secret Station XV, Camouflage Section

2018 Friends events, a talk by Dr John Wigley on the 'History of Haberdashers' and 'On and off the plate' a humorous reflection on the life of retired engine driver Bill Davies which tied in nicely with our exhibition on the 150th anniversary of the railway coming to Elstree 'All Change' proved to be one of our most popular exhibitions to date. The newsletters included a feature on Elstree born artist John Frederick Tayler and our remote exhibition as part of Families Day in Meadow Park which included a working model of the local railway and station created by the skilled hands of Tony de Swarte.



2019 'SOS - Save our Studios' a look back the local passion for film and television and how Elstree Film Studios were rescued, also 'Good Vibrations' on the local music venue the Lynx Club, culture and general life in the 60's. Friends events also on Save Our Studios with Paul Welsh, John Schoonraad on 'Is it real?' an enlightening evening on film and television special effects and a Lynx Club Reunion of former music club members. Feature articles in the newsletter included a report on the tragic death of Sarah Baker in the early 1900's and a review of the annual history walk which included the details of two murders and a visit to the grave of Sir Percy Winn Everett who helped Lord Baden-Powell establish the Scouting movement.



2020 Started well with another incredibly popular exhibition and friends' event on the 20th anniversary of Holby City which were also featured in the newsletter along with an article on Tilehouse Farm.



Sadly, the rest of the year, along with the rest of the world, the museum temporarily closed due to the Covid pandemic.

2021 We ended the Covid closure with a call out for photos and stories on life during lockdown for our archive and we re-opened in September with the return of the Holby City 20 years exhibition and a newsletter feature on the Elstree Observer Corp in WW2.



2022 'Off the rails - the line that never was' the story of how plans



were in place to extend the Northern Line tube out to Elstree in the 1930's and how different Elstree would be today had that happened. But all those plans fell through on the outbreak of war in 1939. Our friend Tony de Swarte again worked his magic with a magnificent working model railway which, as always, proved to be very popular with our



visitors. The newsletter featured a 'notorious' house called 'Ewhurst Manor' and Joan Dorrington wrote a moving piece on her memories of WW2 in Borehamwood.

2023 'Murder, mystery and mayhem' exhibition on local crimes and misdemeanours led to two friends' events, a visit from the Bow Street Police Museum curator Vicki Pipe and a further visit to that museum by friends' members. Shenley secret agent Zigzag, Eddie Chapman was a feature in the newsletter along with Sir Percy Winn Everett and the birth of the Boy Scouts.



2024 Our current exhibition 'Your museum at 10' will run until **16th March** and will be followed by....



'Six of the best' a look back at all our local schools, teachers, pupils, uniform, lessons, reports, sports days and not forgetting the odd detention!



Interested in Volunteering?

Elstree & Borehamwood Museum is run entirely by volunteers, and we are looking for enthusiastic people of all ages to support our local community.

You can commit to as many hours that suit you, we just ask you make a regular commitment to support the day to day running of the museum.

Want to know more? Telephone or drop into the museum (details and opening hours below), or email:

friends@elstree-museum.org.uk

with your details and area of interest and we will be in touch.

Thank you.

Already a Friend?

Why not encourage family, friends, and neighbours to join you in supporting us.

Annual membership costs:

£5 for a single member or

£8 for 2 people at the same address

You will receive up to 3 newsletters per year and

invitations to exclusive Friends events.

Drop into the museum (details below)

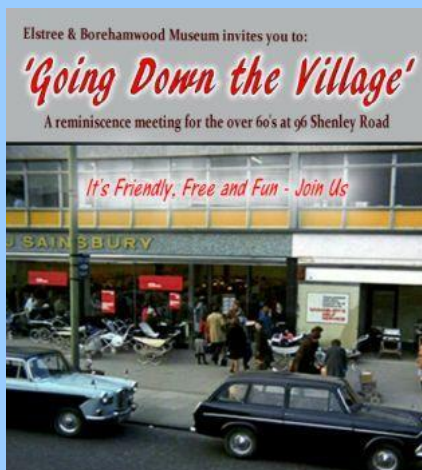
or email:

friends@elstree-museum.org.uk

Thank you.

PLEASE JOIN OUR FREE REMINISCENCE MEETING

**TUESDAY 6TH FEBRUARY
10.30am in Meeting Room One
at 96 SHENLEY ROAD**



Elstree & Borehamwood Museum

96 Shenley Road, Borehamwood, WD6 1EB

Tel: 01442 454888

Open: Tues, Wed & Thurs: 12pm - 6pm

Sat: 10am-3pm

Email: info@elstree-museum.org.uk

FB: www.facebook.com/EBWmuseum

X: [@EBWMuseumHerts](https://twitter.com/EBWMuseumHerts)

Instagram:

<https://www.instagram.com/ebwm2007/>

Trip Advisor: <https://goo.gl/RTbKQi>

Supported by: Hertsmere Borough Council

Elstree & Borehamwood Town Council

The Heritage Lottery Fund

Registered charity No 1157770

VISIT OUR WEBSITE

www.elstree-museum.org.uk/

Thank you for your continued support.

